



LED Panel Light
PL-CL Series





Introduction

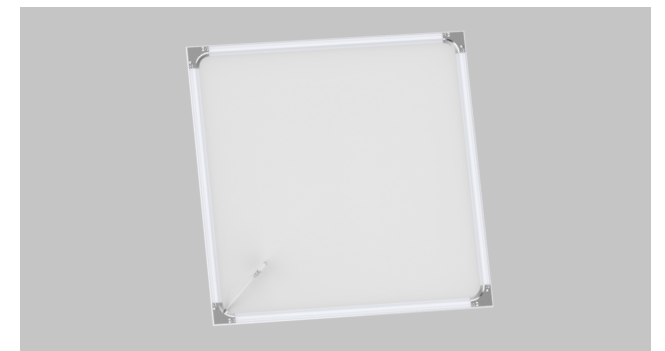
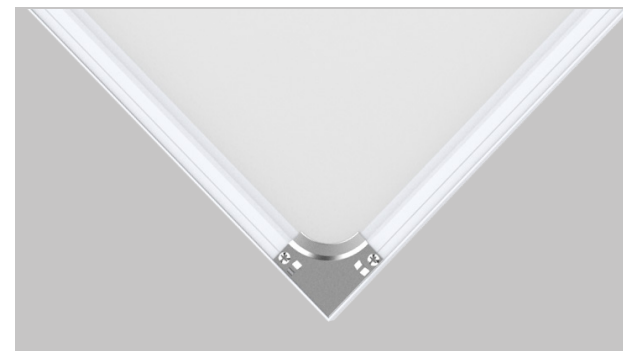
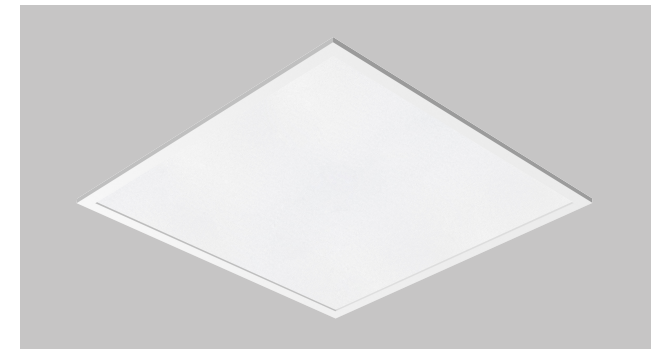
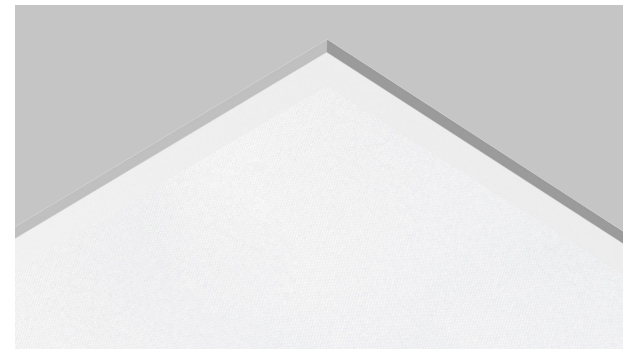
PL-CL is a new panel light solution, it's a screwless design with flat frame; PMMA LGP produces uniform light and high lumen output; Adopts high lumen SMD with CRI>80; Triac dim, 0-10V dimmable, DALI dimmable all available; It can fits seamlessly into any work place, available in various installation ways: recessed, suspended and surface mounted.

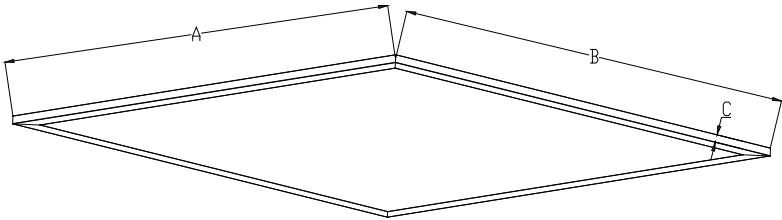
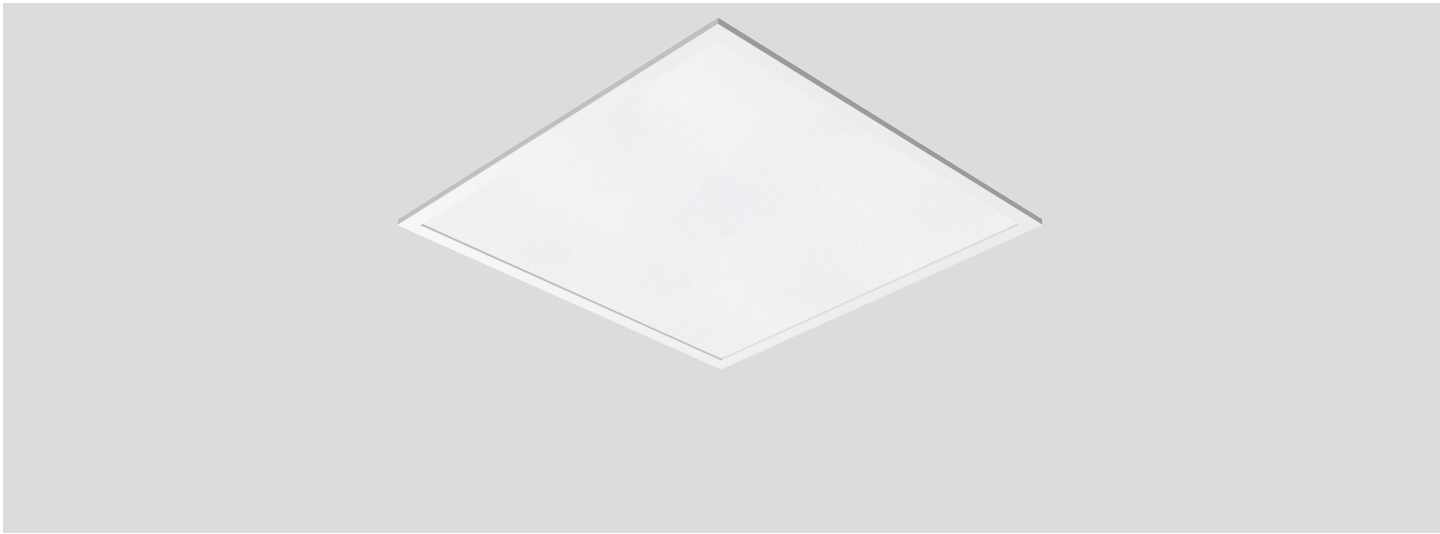
Features

- Screwless design with lighter weight.
- High lumen efficiency, 100lm/W.
- UGR<19 available.
- Interchangeable CCT(3000K+4000K+5700K)by slide switch.
- External flicker free driver.
- Dimmable: Triac, DALI, 0-10V.
- Installation: Recessed, suspended, surface mounted.

Application Areas

Office Lighting: Office room, meeting room, class room, library etc. Commercial Lighting: Shopping mall, supermarket, hotel etc. Other area: Hospital, canteen, theater, bank, subway station etc.





Technical Data Sheet

Code No.			PL3030-18W-CL	PL3060-20W-CL	PL6060-30W-CL	PL6262-30W-CL	PL30120-30W-CL	PL6060-36W-CL	PL6262-36W-CL	PL30120-36W-CL
Dimension(mm)			295*295*9	295*595*9	595*595*9	620*620*9	295*1195*9	595*595*9	620*620*9	295*1195*9
Cutout (mm)			-							
Watt(W)			18W	20W	30W			36W		
Rated Input Voltage(V)			AC230V							
Input Voltage(V)			AC200-240V							
LED Module Input			33-38V DC 450mA CC	33-38V DC 550mA CC	33-38V DC 800mA CC			33-38V DC 900mA CC		
Light Source			SMD							
SDCM			< 6							
CCT(K)			1-CCT: 3000K/4000K/5000K/5700K 3-CCT: 3000K + 4000K + 5700K							
CCT Selection DIP Switch			Yes							
Luminous Flux (lm) ±5%	Non-DIM	1-CCT	1620-1800	1800-2000	2900-3300	2900-3300	2900-3300	3600-3900	3600-3900	3550-3700
	DIM		1500-1750	1700-1900	2700-3000	2700-3000	2700-3000	3450-3800	3450-3800	3450-3650
	Non-DIM	3-CCT	1550-1700	1650-1850	2850-3200	2850-3200	2800-3100	3450-3750	3450-3750	3350-3550
	DIM		1450-1650	1550-1750	2700-2950	2700-2950	2700-2900	3300-3600	3300-3600	3200-3500
CRI			≥80							
Beam Angle (°)			90°							
UGR			< 19							
LED Driver			Built-out							
Dimming Option			Triac/ DALI/ 0-10V							
Sensor			-							
Emergency Kits			-							
Electrical Class			Class II							
Ingress Protection (IP Rating)			IP20							
Impact Resistance (IK Rating)			-							
Product Finishing(Base)			White RAL 9016							
Materials of Optics			PMMA(LGP)+PS(Diffuser)							
Materials of Housing			Aluminum(Frame)							
Lifetime (hr)			50,000h							
Glow wire test (°C)			650°C							
Operating Temp. (°C)			-10°C ~40°C							
Storage Temp. (°C)			-10°C ~50°C							
Installation			Surface mount/ Pendant/ Recessed							

Measurement

Code	Dimension(mm)			Size(mm)	Product Weight (Kg)		Package weight (Kg)		Carton Size(cm)	Qty/CTN	20GP (pcs)	40HQ (pcs)
	A	B	C		N.W/PC	G.W/PC	N.W/CTN	G.W/CTN				
3030	295	295	9	295*295*9	0.61	0.8	6.1	8.8	71*24*40	10	4000	9000
3060	295	595	9	295*595*9	1.05	1.32	5.3	7.5	66*24*40	5	2200	4980
6060	595	595	9	595*595*9	1.8	2.3	9.0	12.5	66*24*70	5	1200	2790
6262	620	620	9	620*620*9	1.97	2.52	9.9	13.8	68.5*24*72.5	5	1170	2670
30120	295	1195	9	295*1195*9	1.9	2.4	9.5	13.3	126.5*24*40	5	1075	2520

Driver Datasheet (Non-Dimmable)

Total load wattage		18W	20W	30W	36W
Output	Output Voltage range	DC30-40V			
	Rated output current	450mA	550mA	800mA	900mA
	Line Regulation	±5%			
	Setup, Rise Time	≤1S			
	Flickering Index	≤5%			
Input	Input Voltage	AC200-240V			
	Rated Input Voltage(V)	AC230V			
	Frequency	50/60Hz			
	Input Current	≤0.12A	≤0.13A	≤0.2A	≤0.23A
	Rated Input Current	≤0.09A	≤0.1A	≤0.16A	≤0.21A
	Power Factor	≥0.9			
	THD	<20% @230V			
	Efficiency	≥90%			
	No load wattage	<0.5W			
Protection	Short circuit protection	Pass			
	Over voltage protection	Pass			
	Over temperature protection	Pass			
Safety &EMC	Withstand voltage	I/P-O/P:3.75KVac,<5mA 60S; I/P-FG:1.6KVac,<5mA 60S; O/P-FG:0.5KVac,<5mA 60S			
	Isolation Resistance	I/P-O/P: 500VDC, ≥100M Ω			
	Surge	IEC/EN61000-4-5(P<25W; L-N:500V, L/N-PE:1KV); IEC/EN61000-4-5 (P≥25w L-N:1KV, L/N-PE:2KV)			
	EMC Emission	EN55015, EN61000-3-2			
	EMC Immunity	EN61000-4-2,3,4,5,6,8,11; EN61547			

Driver Datasheet (Triac Dimmable)

Total load wattage		18W	20W	30W	36W
Output	Output Voltage range	DC30-40V		DC30-40V	
	Rated output current	450mA	550mA	800mA	900mA
	Line Regulation	±5%			
	Setup, Rise Time	≤1S			
	Flickering Index	≤5%			
Input	Input Voltage	AC200-240V			
	Rated Input Voltage(V)	AC230V			
	Frequency	50Hz			
	Input Current	≤0.12A	≤0.13A	≤0.2A	≤0.23A
	Rated Input Current	≤0.09A	≤0.1A	≤0.16A	≤0.21A
	Power Factor	≥0.9			
	THD	<20% @230V			
	Efficiency	≥83%	≥84%	≥84%	≥84%
	No load wattage	<1W			
Protection	Short circuit protection	Pass			
	Over voltage protection	Pass			
	Over temperature protection	Pass			
Safety &EMC	Withstand voltage	I/P-O/P:3.75KVac,<5mA 60S; I/P-FG:1.6KVac,<5mA 60S; O/P-FG:0.5KVac,<5mA 60S			
	Isolation Resistance	I/P-O/P: 500VDC, ≥100M Ω			
	Surge	IEC/EN61000-4-5(P<25W; L-N:500V, L/N-PE:1KV); IEC/EN61000-4-5 (P≥25w L-N:1KV, L/N-PE:2KV)			
	EMC Emission	EN55015, EN61000-3-2			
		EMC Immunity			
		EN61000-4-2,3,4,5,6,8,11; EN61547			

Installation Procedure

WARNING

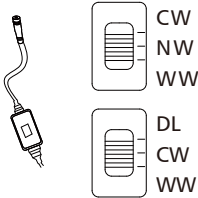
- 
- 

**Turn Off
Power Supply**
- 1.Switch off before installation.
 - 2.Switch on only after complete installation and examination of the circuit.
 - 3.Professional electrician for installation and maintenance only.

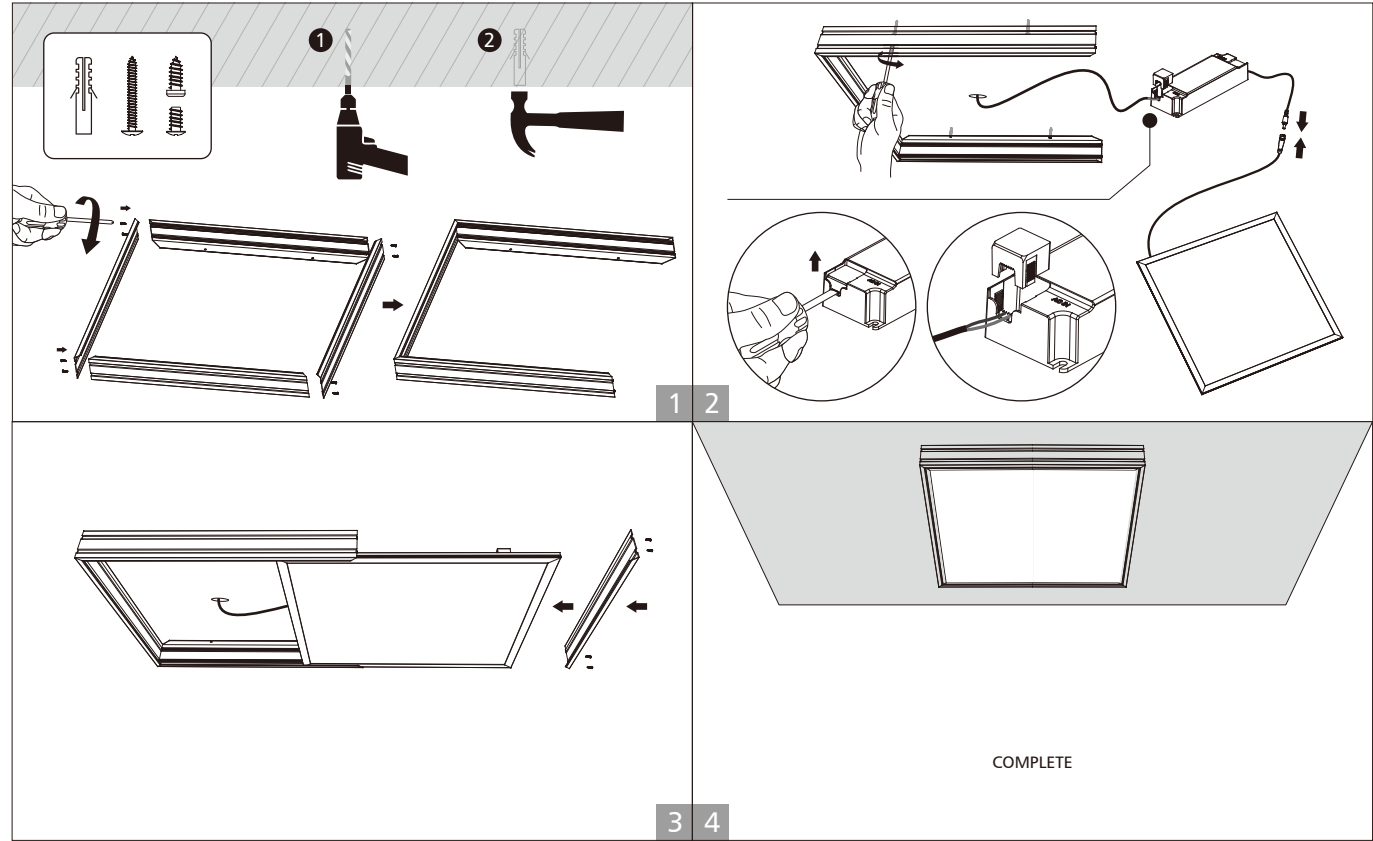
Turn Off power supply before starting any installation. Read instructions & check you have all the tools & accessories to complete the installation correctl y.

For color changeable model(controlled by Slide Switch in lamp), please select light color before installation,see below picture.

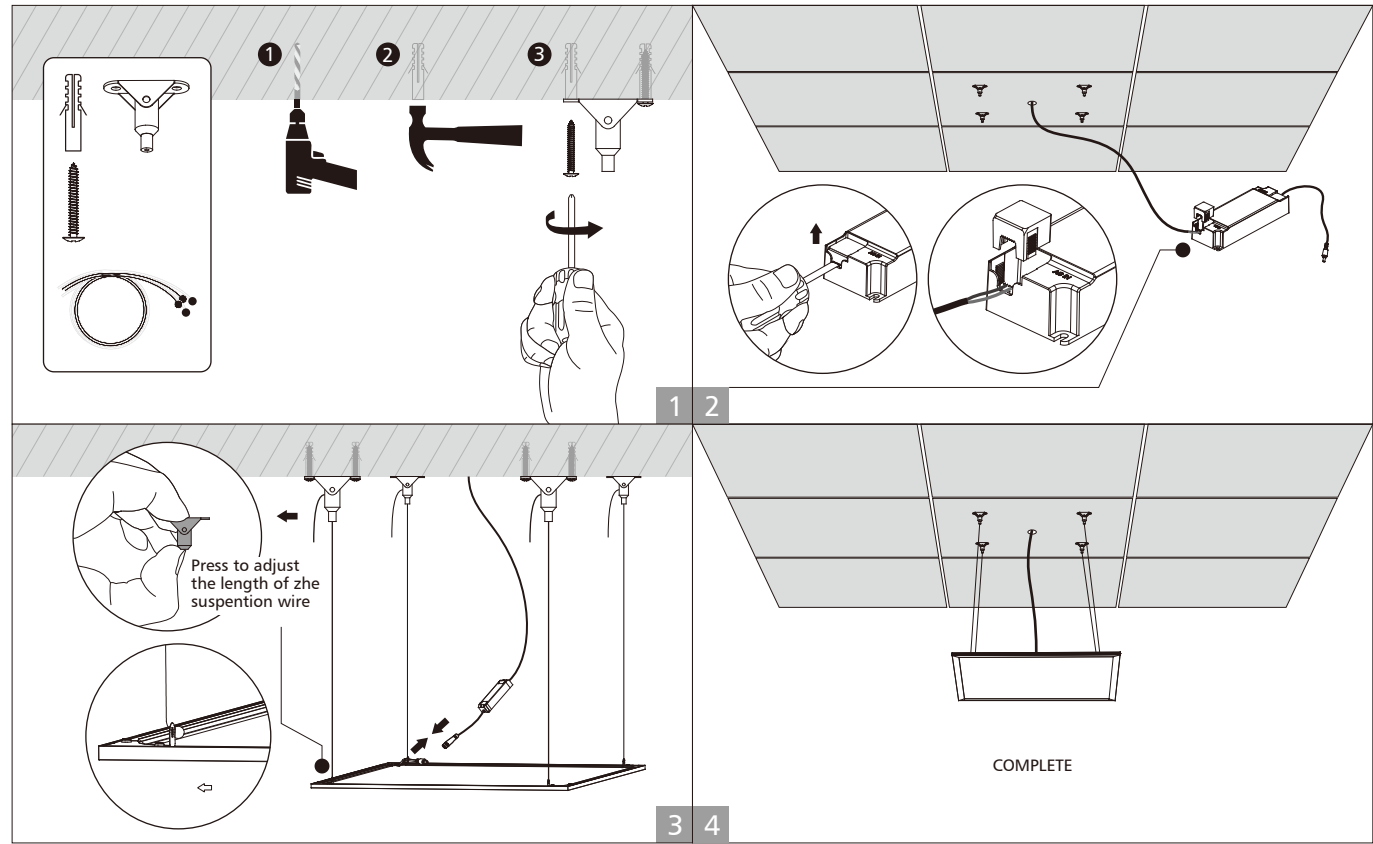
choose color by slide switch with corresponding color temperature.



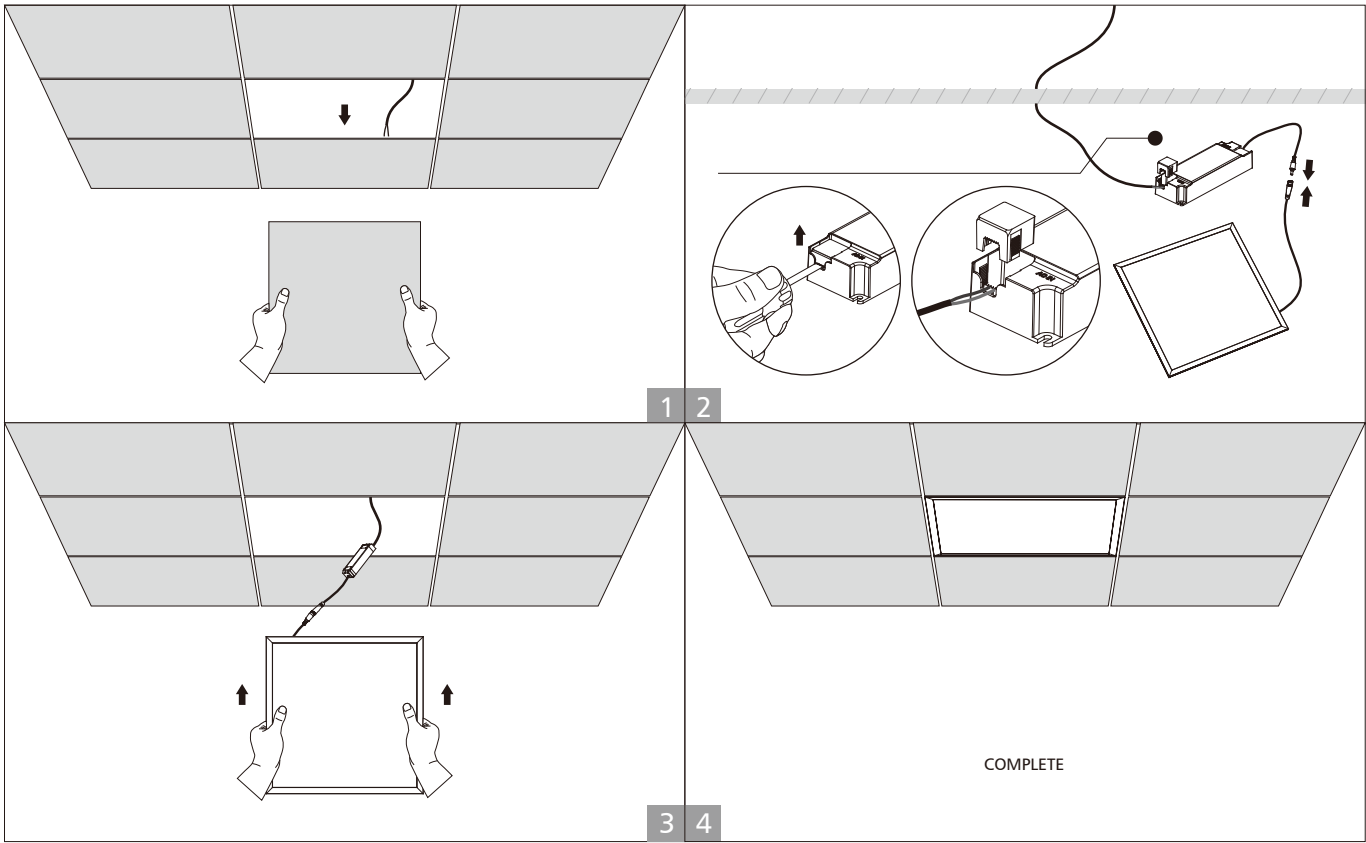
Surface mount



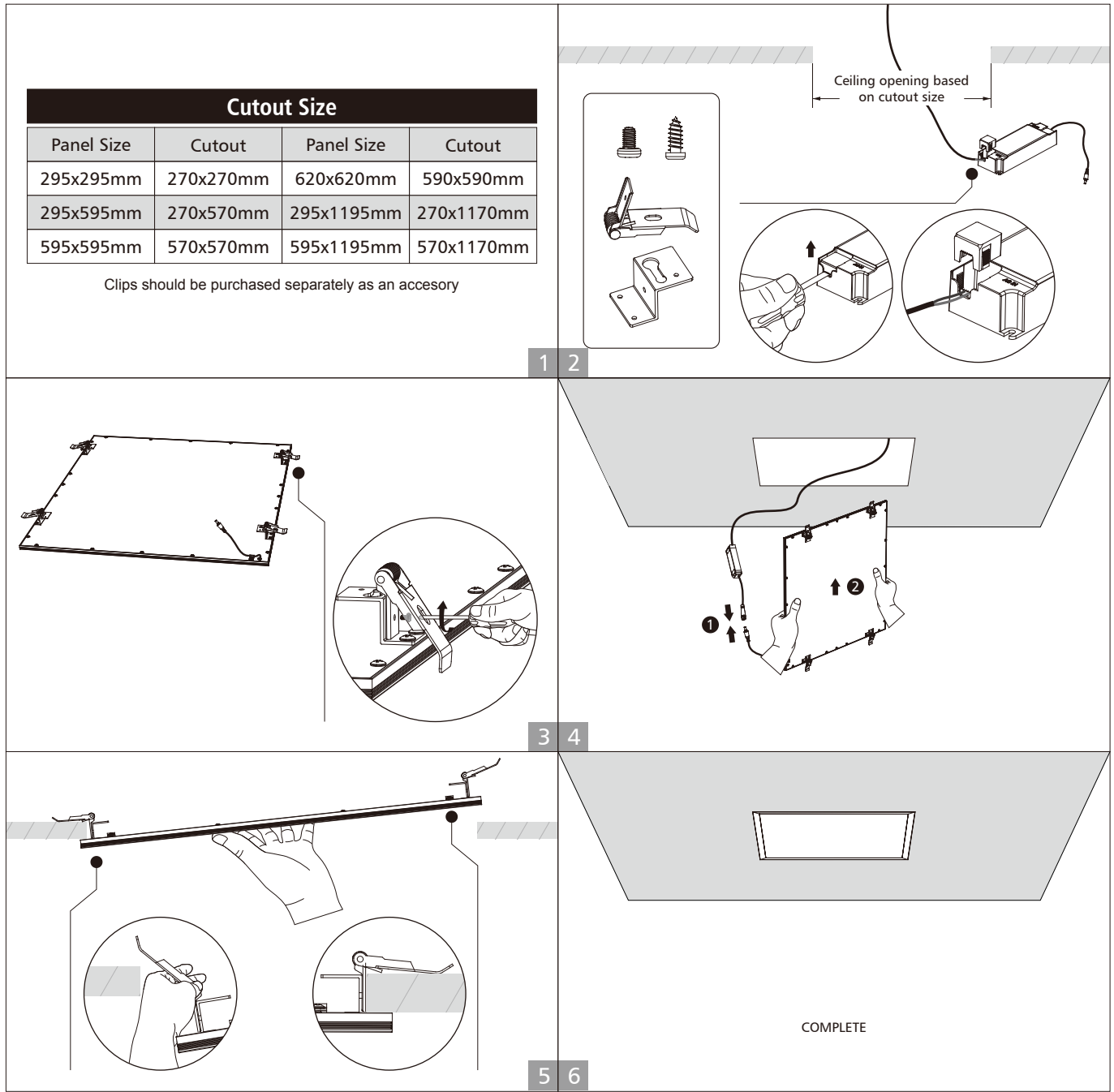
Pendant



■ Recessed(1)



■ Recessed(2)





Up to Shine, there is life 光之上，是生活

▼ www.upshine.com info@upshine.com TEL: +86 755 2919 7332 ▼

Add: 2nd building Dingfeng High-Tech Zone, Fuyuan 1st road, Fu Yong Sub-district, Bao'an, Shenzhen China