

Entry / ECO

Standard / STD

Professional / PRO

ODM & OEM

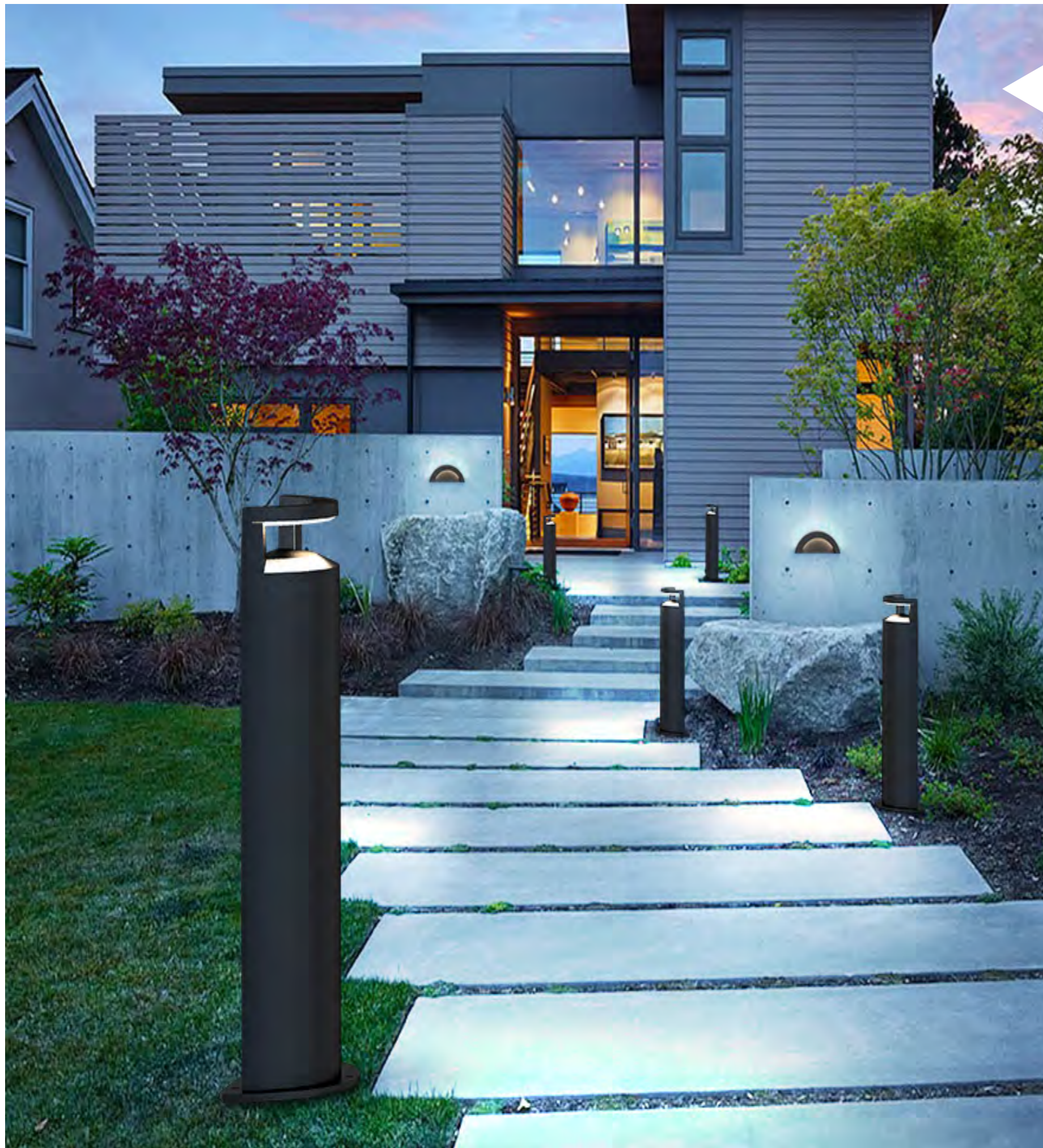
Intelligent / INT



LED Garden Light  
NL08 Series







## Introduction

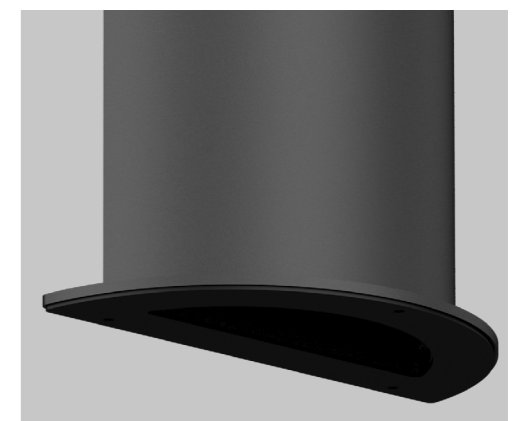
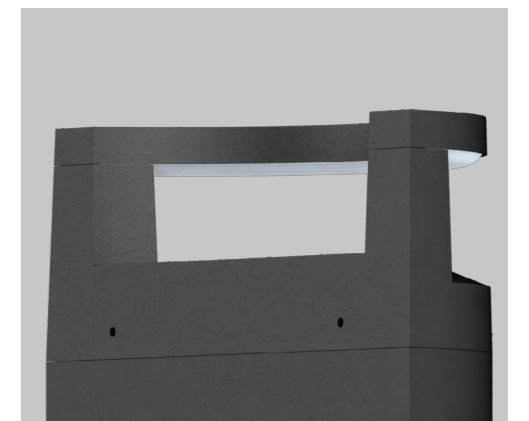
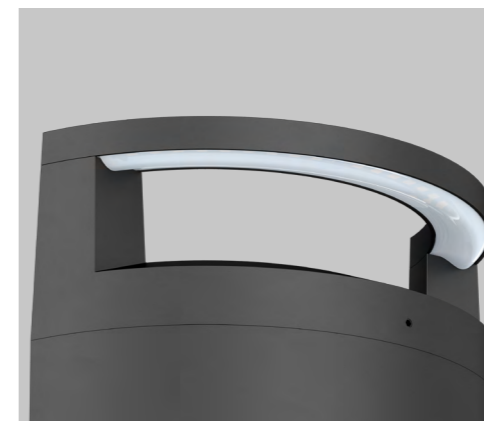
This garden light won 2020 IF Award. It' used a special optical structure to deliver a layering of indirect and soft light. Adopt high lumen SMD LED light source with high CRI, aluminum body with great thermal management. Standard length is 500mm 'and 1000mm, any other bollard length is also available.

## Features

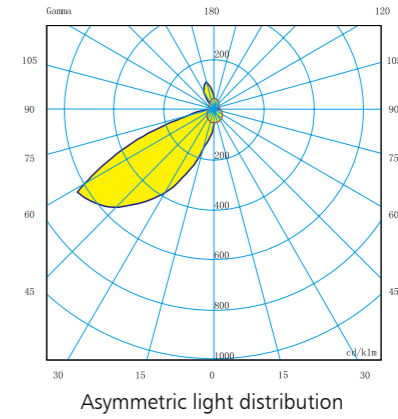
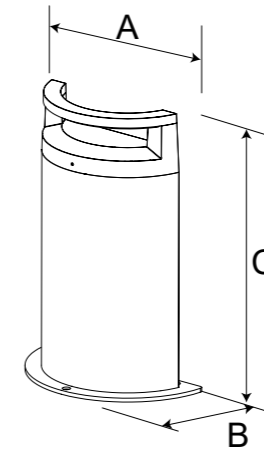
- With IF design Award.
- Indirect lighting design offers a great visual experience.
- Special shape design with charming light spot.
- High lumen efficiency, 50LM/W.
- IP65 IK08 high protection.
- Size: 500mm/1000mm, other sizes also available.

## Application Areas

Townhouse, hotel, restaurant. Garden area: Pathway, Etc...







### Measurement

Code	Dimension(mm)			Size(mm)	Product Weight (Kg)		Package weight (Kg)		Carton Size(cm)	Qty/CTN	20GP (pcs)	40HQ (pcs)
	A	B	C		N.W/PC	G.W/PC	N.W/CTN	G.W/CTN				
NL08A-10W	249	121	500	249X121X500	2.34	2.68	16.1	17.5	58×53.5×39	6	1254	3294
NL08B-10W	249	121	1000	249X121X1000	4.03	4.6	9.2	10.4	108×27.5×26.5	2	672	1584

### Technical Data Sheet

Code No.	NL08A-10W	NL08B-10W
Dimension(mm)	249×121×500	249×121×1000
Cutout (mm)	-	-
Watt(W)	10W	
Rated Input Voltage(V)	AC200-240V	
Input Voltage(V)	AC230V	
LED Module Input	DC72V 135mA	
Light Source	SMD	
SDCM	<6	
CCT(K)	1-CCT: 3000K/4000K/5000K/5700K	
CCT Selection DIP Switch	NO	
Luminous Flux (lm) ±5%	Non-DIM 1-CCT	490-530
	DIM 1-CCT	-
CCT Selection DIP Switch	Non-DIM 3-CCT	-
	DIM 3-CCT	-
CRI	Ra>80	
Beam Angle (°)	50°	
UGR	-	
LED Driver	Built-in	
Dimming Option	-	
Sensor	-	
Emergency Kits	-	
Electrical Class	Class I	
Ingress Protection (IP Rating)	IP65	
Impact Resistance (IK Rating)	IK08	
Product Finishing(Base)	Black RAL9005	
Materials of Optics	PC	
Materials of Housing	Aluminum	
Lifetime (hr)	50,000h	
Glow wire test (°C)	850°C	
Operating Temp. (°C)	-20°C ~45°C	
Storage Temp. (°C)	-20°C ~65°C	
Installation	Ground mount	

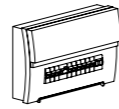
### Driver Datasheet (Non-dimmable)

Total load wattage		10W
Output	Output Voltage range	65-75V
	Rated output current	135mA
	Line Regulation	±5%
	Setup, Rise Time	≤0.5S
	Flickering Index	-
Input	Input Voltage	AC200-240V
	Rated Input Voltage(V)	230V
	Frequency	50/60Hz
	Input Current	0.06A
	Rated Input Current	0.05A
	Power Factor	0.9
	THD	-
	Efficiency	≥88%
	No load wattage	<0.5W
Protection	Short circuit protection	Pass
	Over voltage protection	Pass
	Over temperature protection	Pass
Safety &EMC	Withstand voltage	-
	Isolation Resistance	I/P-O/P: 500VDC, ≥100M Ω
	Surge	IEC61000-4-5(L-N:0.5KV, L/N-PE:1KV)
	EMC Emission	EN55015, EN61000-3-2
EMC Immunity	EN61000-4-2,3,4,5,6,8,11; EN61547	

# Installation Procedure

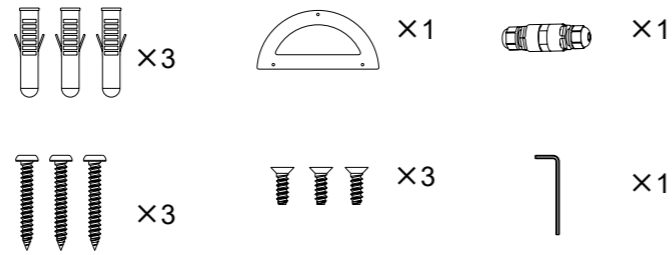
## WARNING ⚡

1. Switch off before installation / maintenance.
2. Switch on only after complete installation and examination of the circuit.
3. Professional electrician for installation and maintenance only.



Turn Off power supply before starting any installation. Read instructions & check you have all the tools & accessories to complete the installation correctly.

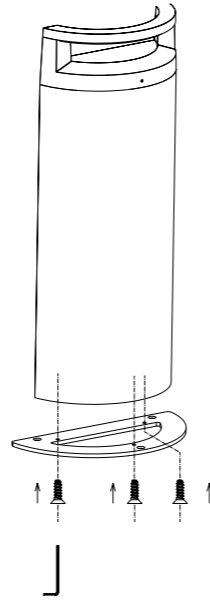
## Ground mount installation



Accessory Package

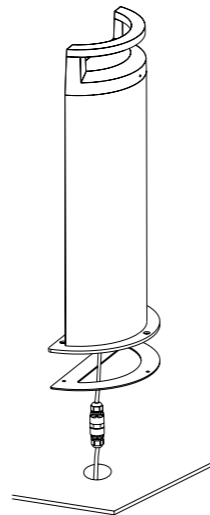
### Step 1

Fix the base plate into the lamp bollard.



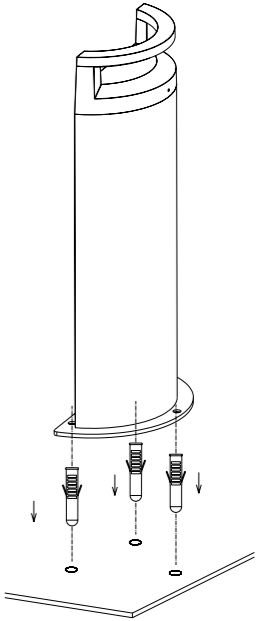
### Step 2

Wire through the waterproof rubber mat, connect AC wire.



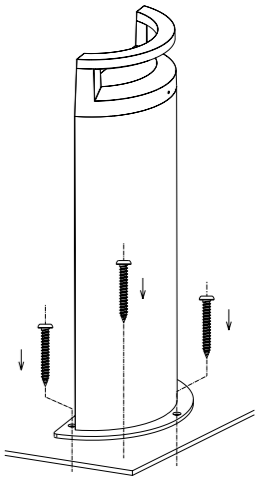
### Step 3

Drill holes according to base plate, insert plastic anchor into the holes.



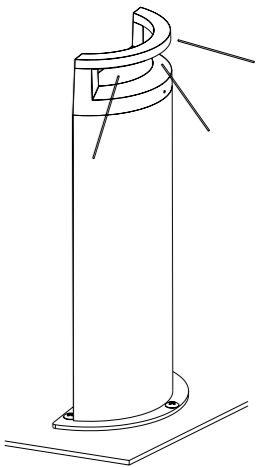
### Step 4

Lock the screw and fix the bollard.



### Step 5

Turn on.





*Up to Shine, there is life*

▼ [www.upshine.com](http://www.upshine.com) [info@upshine.com](mailto:info@upshine.com) TEL: +86 755 2919 7332 ▼

Add: 2nd building Dingfeng High-Tech Zone, Fuyuan 1st road, Fu Yong Sub-district, Bao'an, Shenzhen China