

1 PHASE 2 WIRE TRACK DATASHEET



Model	Three Line Track System 4B
Sizes	100x35x20mm, 150x35x20mm, 200x35x20mm
Mounting	Surface mounted
Material	Aluminum alloy, copper wiring
Authentication	CE, ROHS
Environment	Indoor
Notes	Strip is made of insulating PVC, conductive with copper wire.

SPECIFICATION

Measuring Tools	Vernier caliper
Size (mm)	34 x 19,5mm

1P2W tracks are designed for easy surface mounting on ceilings and walls, or recessed mounting in suspended ceilings.

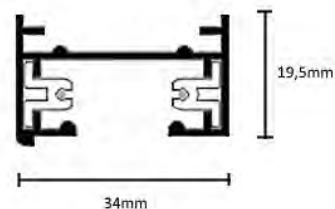
ELECTRICAL

Max. safe load (Wattage)	2000W
Transformer mounting	Integral
Transformer type	Electronic
Maximum safe current	10A
Voltage	220-240V AC

Colors:

- White
- Black

Dimensions: 34 x 19,5mm

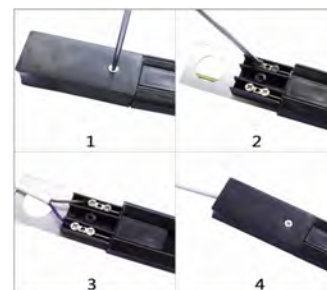


PHYSICAL

Construction material	6063 aluminum, copper
Gravity test	10kg weight
Working temperature	Operation: -30 to +40 °C



For 1-phase track the power supply is attached at the end on of a track.



CERTIFICATIONS



1 PHASE 2 WIRE TRACK CONNECTORS DATASHEET

These connectors are suitable for only 1 phase 2 wire tracks.

<p>Model 1P2W track connector I Color Black, White Mounting Surface mounted Material Aluminum alloy, copper wiring Authentication CE, ROHS Environment Indoor Guarantee 3 years</p>		
<p>Model 1P2W track connector L Color Black, White Mounting Surface mounted Material Aluminum alloy, copper wiring Authentication CE, ROHS Environment Indoor Guarantee 3 years</p>		
<p>Model 1P2W track connector T Color Black, White Mounting Surface mounted Material Aluminum alloy, copper wiring Authentication CE, ROHS Environment Indoor Guarantee 3 years</p>		
<p>Model 1P2W track connector X Color Black, White Mounting Surface mounted Material Aluminum alloy, copper wiring Authentication CE, ROHS Environment Indoor Guarantee 3 years</p>		



CERTIFICATIONS

